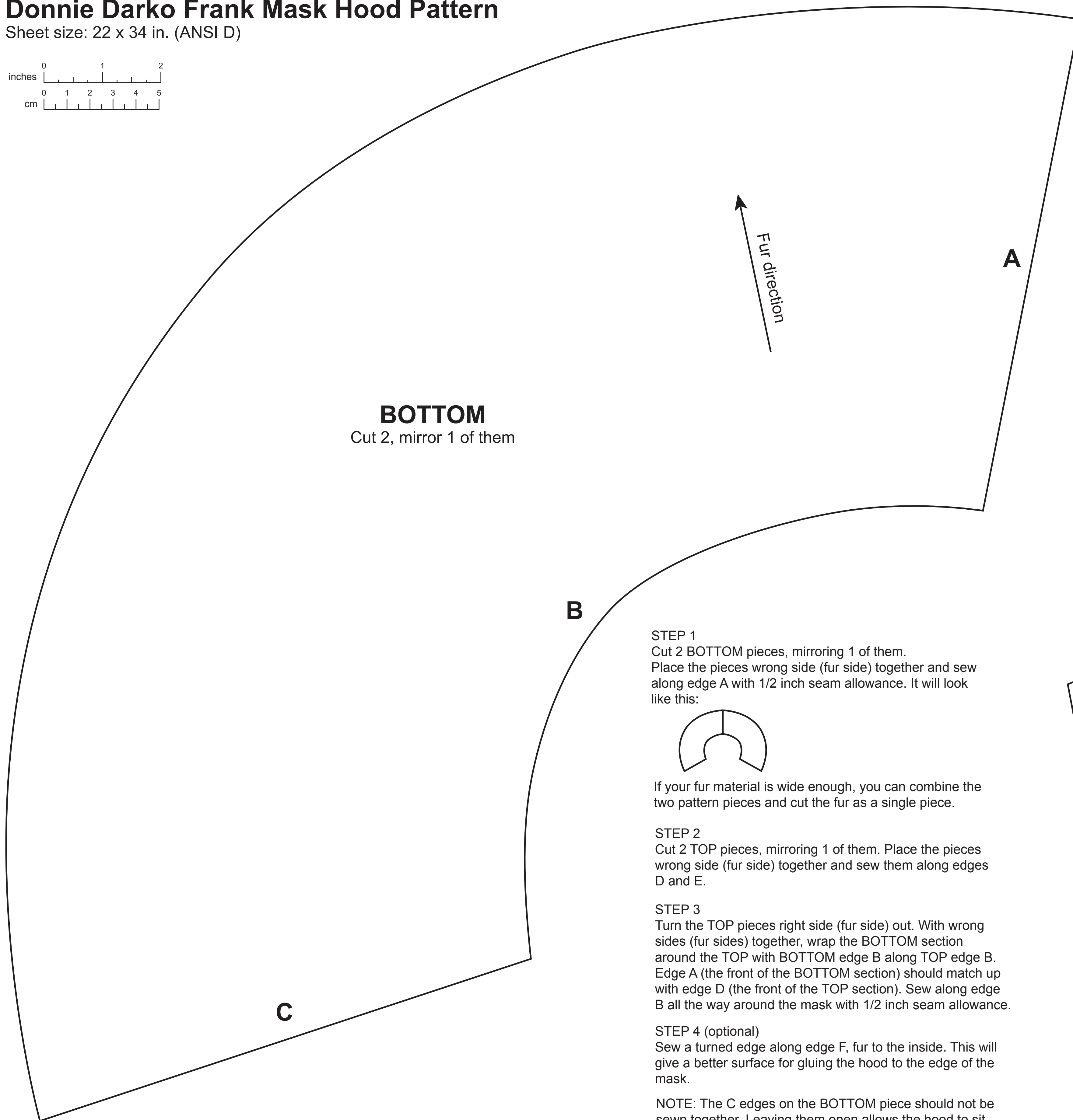


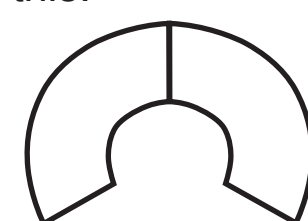
Donnie Darko Frank Mask Hood Pattern

Sheet size: 22 x 34 in. (ANSI D)



BOTTOM
Cut 2, mirror 1 of them

STEP 1
Cut 2 **BOTTOM** pieces, mirroring 1 of them. Place the pieces wrong side (fur side) together and sew along edge **A** with 1/2 inch seam allowance. It will look like this:



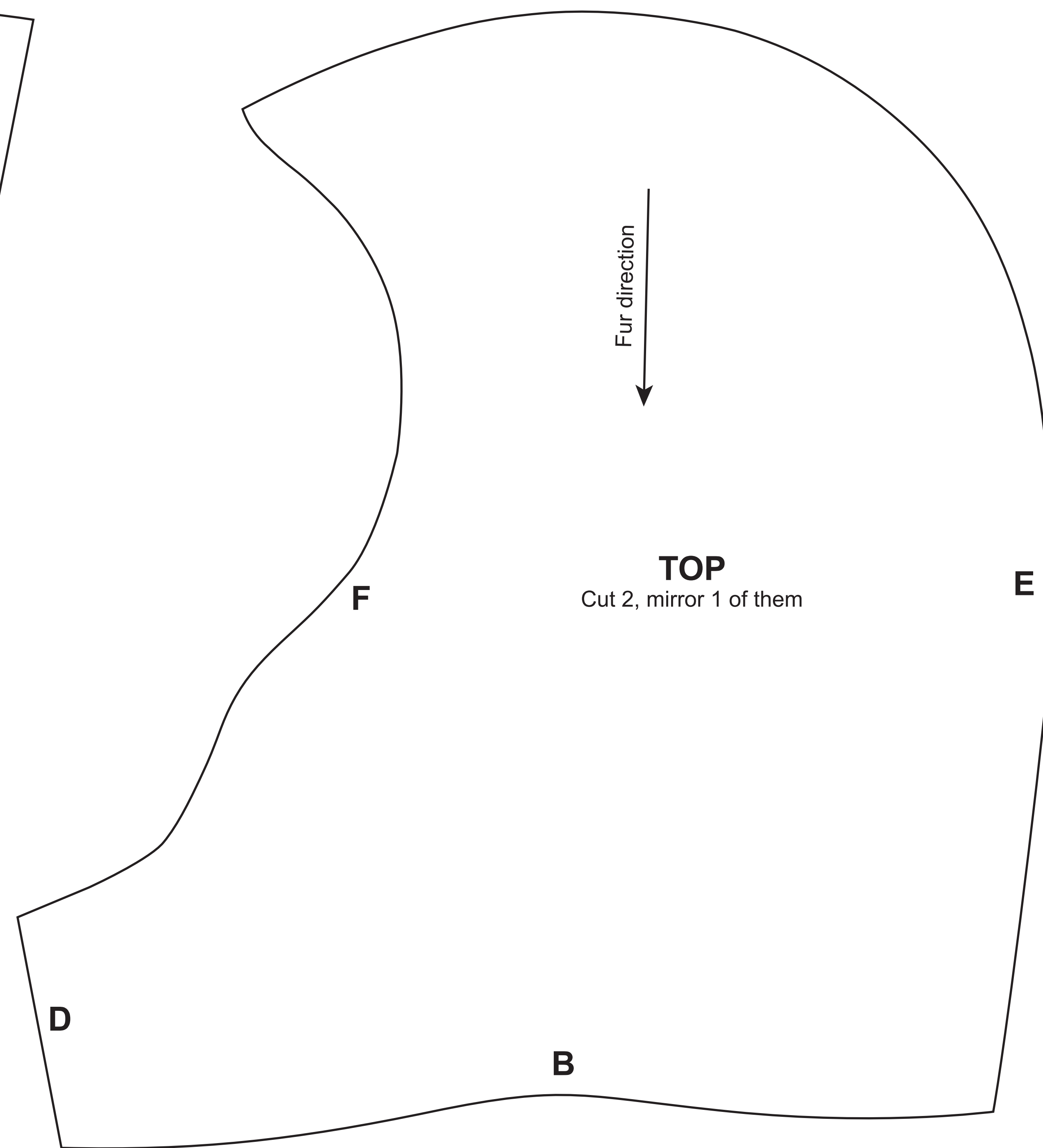
If your fur material is wide enough, you can combine the two pattern pieces and cut the fur as a single piece.

STEP 2
Cut 2 **TOP** pieces, mirroring 1 of them. Place the pieces wrong side (fur side) together and sew them along edges **D** and **E**.

STEP 3
Turn the **TOP** pieces right side (fur side) out. With wrong sides (fur sides) together, wrap the **BOTTOM** section around the **TOP** with **BOTTOM** edge **B** along **TOP** edge **B**. Edge **A** (the front of the **BOTTOM** section) should match up with edge **D** (the front of the **TOP** section). Sew along edge **B** all the way around the mask with 1/2 inch seam allowance.

STEP 4 (optional)
Sew a turned edge along edge **F**, fur to the inside. This will give a better surface for gluing the hood to the edge of the mask.

NOTE: The **C** edges on the **BOTTOM** piece should not be sewn together. Leaving them open allows the hood to sit properly on the shoulders while worn.



TOP
Cut 2, mirror 1 of them